

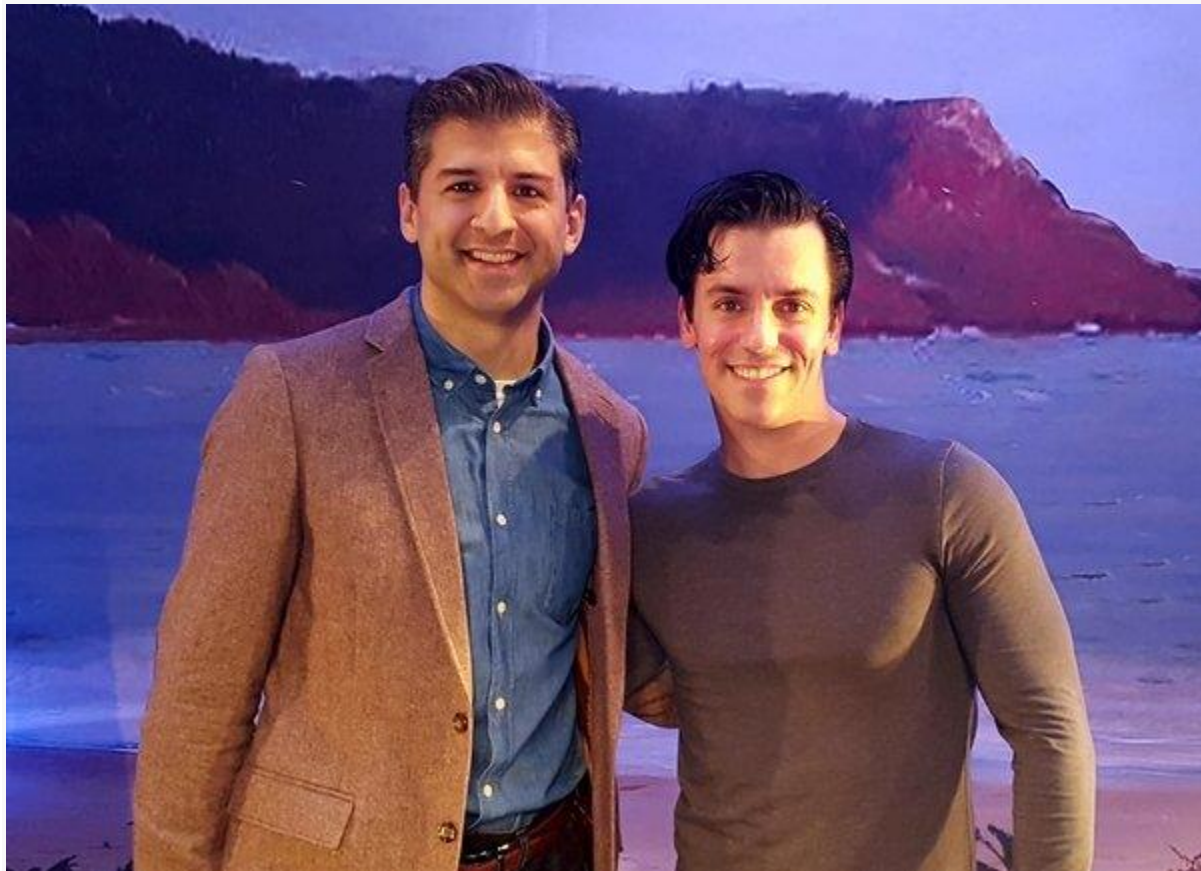
<https://www.broadwayworld.com/article/Photo-Flash-Tony-Yazbeck-Visits-Broadway-Buddies-in-THE-NEW-WORLD-at-Bucks-County-Playhouse-20171122>



Photo Flash: Tony Yazbeck Visits Broadway Buddies in THE NEW WORLD at Bucks County Playhouse

by BWW News Desk Nov. 22, 2017

Tweet Share



Tony Yazbeck and Clyde Alves – photo by Chris Smith

It was a reunion for two of the lead actors from Broadway's "On the Town" when Tony-nominee **Tony Yazbeck** visited New Hope, PA to see **Clyde Alves** at **Bucks County Playhouse**. Alves plays the role of Tago in the world premiere of "The New World", the musical comedy that is getting raves from critics. John Timpane of the Philadelphia Inquirer said ... "With sneaky brilliance, beginning to end, The New World is fresh, funny, and fluid." Jean Brenner of Bucks County Herald said, "Mark my words, The New World is headed to Broadway: it's special, it's funny, it's delightfully entertaining."

Bucks County Playhouse's production of "The New World" is produced by **Robyn Goodman, Alexander Fraser, Stephen Kocis**, and **Josh Fiedler**. "The New World", which received its first reading at the Playhouse's **Oscar Hammerstein Festival** in 2014. The book is by **Regina DeCicco** and **L.F. Turner**, music by **Gary Adler** ("Altar Boyz") and lyrics by **Phoebe Kreutz Stafford Arima** (Broadway's "Allegiance" and newly appointed Artistic Director of Theater Calgary) directs with choreography by **Bucks County Playhouse** Artistic Associate **Lorin Latarro** ("Waitress").

"The New World" reimagines the myth of the first meeting of the Pilgrims and Native Americans. The year is 1620. The Native Americans are enjoying a gluten free, low carb, artisanally happy life when they are invaded by the nation's first immigrants - Pilgrims! There goes the neighborhood, but in the tradition of all musical comedies, love wins!

The cast includes a mix of Broadway veterans and newcomers led by **Ann Harada** ("Avenue Q" and "Rodgers + Hammerstein's Cinderella") as Chief Hyannis, **Jillian Gottlieb** (Theater Under the Stars "Into the Woods" and "The Golden Bride" Off-Broadway) as Susanna Standish and **Jennifer Perry** (Broadway's "Kinky Boots" and "Mamma Mia!") as Joan. Theater and recording star, **Justin Guarini**, as Santuit. Guarini last appeared at the Playhouse in the new musical "Cake Off" as well as in the theater's acclaimed production of "Company." He is a member of the Playhouse Artists Board of Directors.

The cast also features **GINNA LE VINE** ("Picnic" Off-Broadway). Le Vine is the grand-niece of Oscar-winning actress **Grace Kelly**, who made her professional stage debut in 1949 at **Bucks County Playhouse**, where she was a member of its famed apprentice program. She is joined by **Clyde Alves** (Broadway's "On the Town," "Bullets Over Broadway") as Tago, **Eddie Cooper** (Encores "Assassins" and "Little Shop of Horrors") as Miles Standish, **Ann Sanders** (Disney's "Frozen" and Broadway's "The King and I") as Mrs. Corn, **Rod Singleton** (Ogunquit Playhouse's "Ragtime") as Colonel Corn and **Tyler Maynard** (Broadway's "The Little Mermaid" and "Altar Boyz" Off-Broadway) as Carl.

Adena Ershow, **Yael Rizo wy**, **Kiet Tai Cao**, **Danny Bevins**, **Brandon Weber** and **Annelise Cepero** round out the ensemble.

Bucks County Playhouse Artistic Associate **Anna Louizos** (Broadway's "School of Rock" and BCP's "Guys and Dolls") is Scenic Designer. **Jen Caprio** is Costume Designer and **J. Jared Janas** is Wig, Hair and Makeup Designer. **Kirk Bookman** is lighting designer and **Joshua D. Reid** is sound designer. Musical Director is **Paul Masse**. Orchestrations are by **Danny Troob** with dance arrangements are by **Sam Davis**. Casting is by **Tara Rubin** Casting.

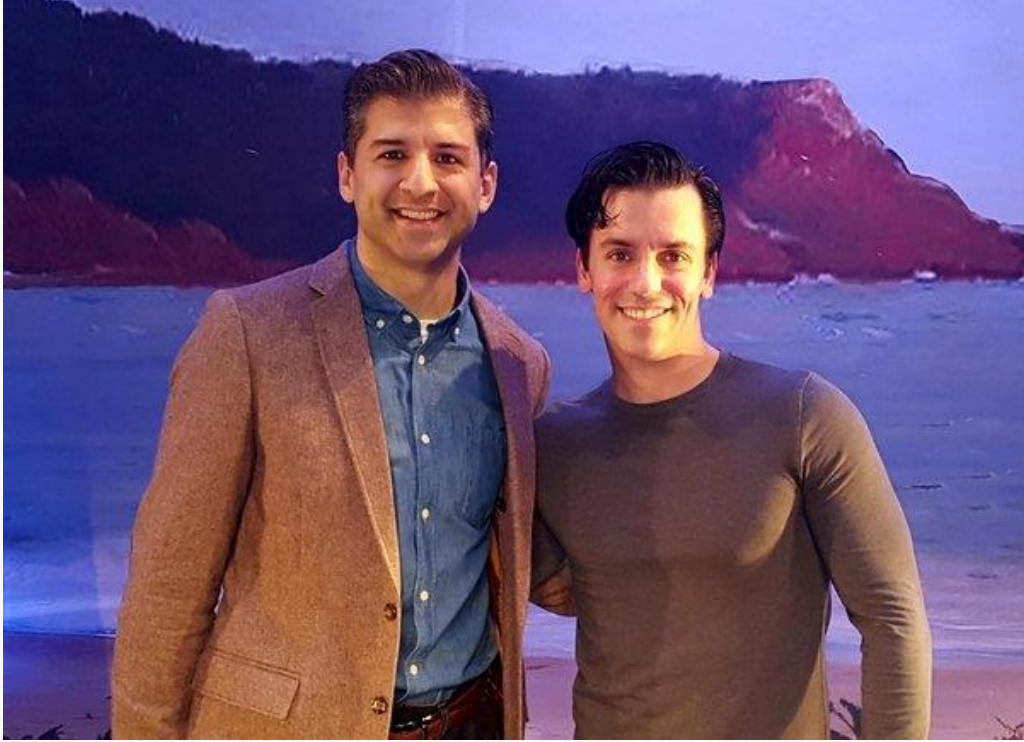
"The New World" is the third of four world premiere productions presented at **Bucks County Playhouse** this year. The summer season launched in May with the debut of "Clue: On Stage," "Rock and Roll Man: The Story of Alan Freed" and a new comedy by **Gordon Greenberg** and **Steve Rosen**, "Ebenezer Scrooge's Big Playhouse Christmas Show," which resets Dickens' classic tale "A Christmas Carol" in New Hope.

Tickets to "The New World" range from \$40 - \$75. Special rates for groups of 10 or more. For complete details, and to purchase tickets, please visit buckscountyplayhouse.org, call 215-862-2121, or visit the box office at 70 South Main Street, New Hope, PA.

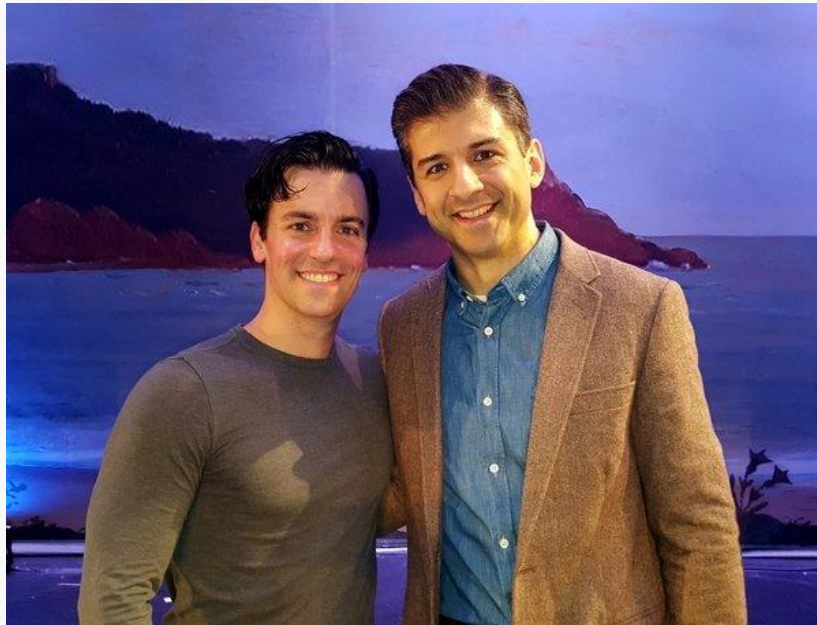
Bucks County Playhouse, a nonprofit 501(c)3 organization, is the oldest and largest professional Equity performing arts center in Bucks County. Under the direction of Tony Award-winning producers **Alexander Fraser** and **Robyn Goodman**, the Playhouse provides first class professional theatrical entertainment as well as community events, partnerships and arts education programming for visitors and residents of New Hope, Doylestown, Lambertville and the Delaware Valley.

Located between Philadelphia and New York, **Bucks County Playhouse** opened in 1939 in a converted 1790 gristmill after a group of community activists, led by Broadway orchestrator **Don Walker** and playwright **Moss Hart**, rallied to save the building. The Playhouse quickly became one of the country's most famous regional theaters, featuring a roster of American theatrical royalty including **Helen Hayes**, **Kitty Carlisle**, **George S. Kaufman**, **Grace Kelly**, **Robert Redford**, **Bert Lahr**, **Walter Matthau**, **Angela Lansbury**, **Bernadette Peters**, **Alan Alda**, **Tyne Daly**, **Liza Minnelli** and **Audra McDonald** and remained in continuous operation until December 2010. In 2012, the Playhouse re-opened thanks to the efforts of the Bridge Street Foundation, the nonprofit family foundation of Kevin and **Sherri Daugherty**, and Broadway producer **Jed Bernstein**.

Since its renovation, significant productions include **Terrence McNally's** "Mothers and Sons" starring **Tyne Daly**, which moved to Broadway and was nominated for two Tony Awards, and "Misery" by **William Goldman** based on the **Stephen King** novel which also went on to a Broadway run in the 2015-16 season. Two of the Playhouse's recent productions -- "Company" starring **Justin Guarini**, and **William Finn's** "The 25th Annual Putnam County Spelling Bee" -- were named by Wall Street Journal to its "Best of Theatre" list for 2015. The Playhouse's productions of "Steel Magnolias" and "Buddy: The **Buddy Holly** Story" broke box office records in 2016. Thanks to the Bridge Street Foundation and its vision for the New Hope waterfront, the Playhouse is currently in construction as it adds a 4,000-square foot riverfront cafe and bar that will open in 2018.



Tony Yazbeck, Clyde Alves



Tony Yazbeck, Clyde Alves



Tony Yazbeck and the Cast of THE NEW WORLD



Tony Yazbeck, Clyde Alves, Ann Harada



Clyde Alves, Justin Guarini and Tony Yazbeck